



New York Freedom Riders

R.A.C.E

Riders Against Constitutional Erosion

Distributed by
New York Freedom Riders
www.newyorkfreedomriders.com

In October 2007, the New York State Police, along with other agencies, conducted a motorcycle safety checkpoint in the town of East Fishkill. Law enforcement stated the purpose of the checkpoint was to increase motorcycle safety by insuring compliance with applicable Vehicle & Traffic Laws.

NHTSA, FHWA and numerous local police departments have shown an interest in this initiative and NHTSA had requested and received a presentation at the Lifesavers Conference in Portland, Oregon in April, 2008. According to Thomas Louizou, NHTSA Regional Administrator, NHTSA is considering adopting the concept as a “best practice”.

This New York State Motorcycle Enforcement and Education tactic is being featured in 2008 national conferences attempting to address motorcycle fatalities.

New York State Police

Motorcycle Enforcement & Education

Sergeant Jim Halvorsen

Traffic Services Section

jhalvors@troopers.state.ny.us

518-473-7972



Enforcement

“Operation 5060”

Dedicated to the memory of
Trooper Craig Todeschini





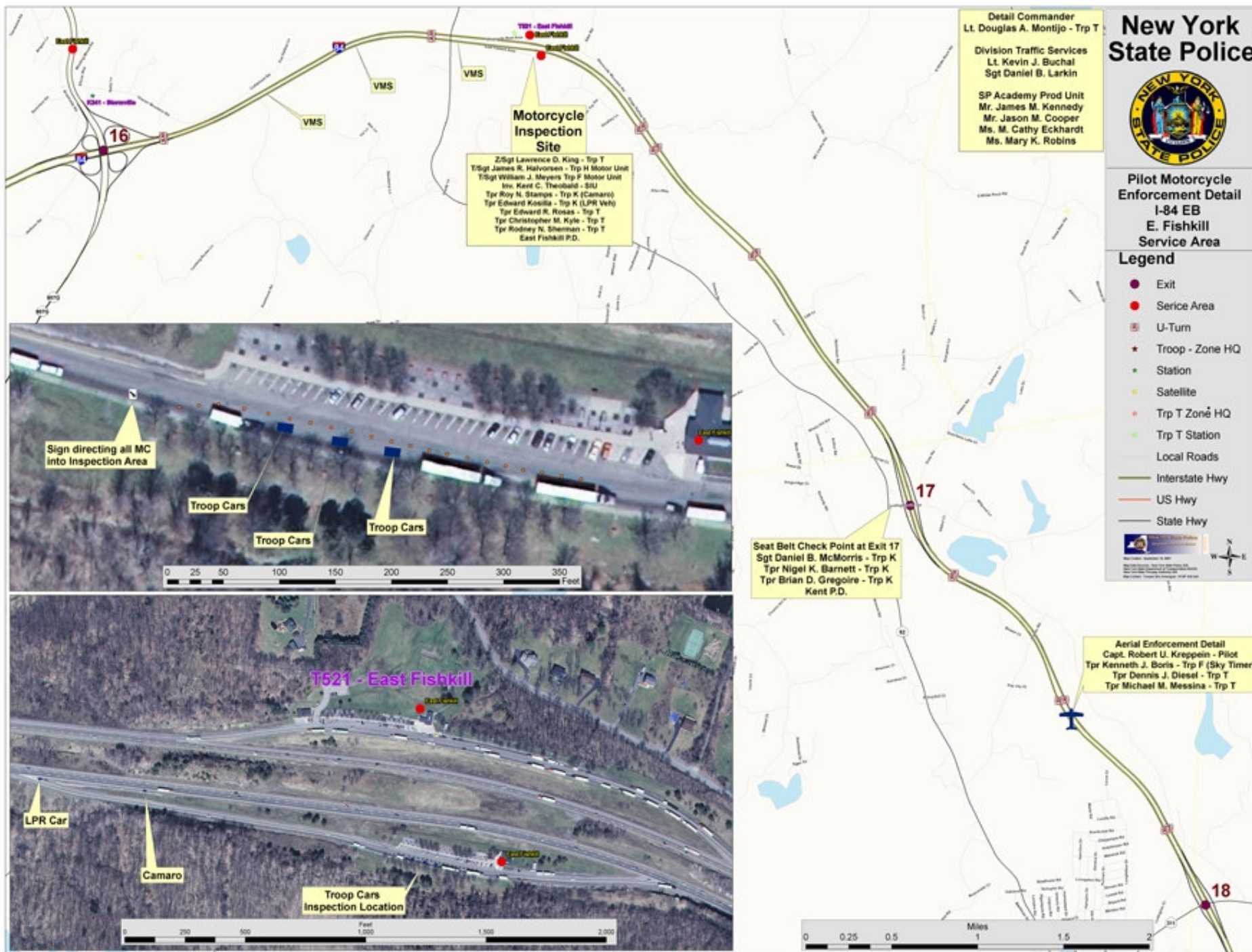
Briefing

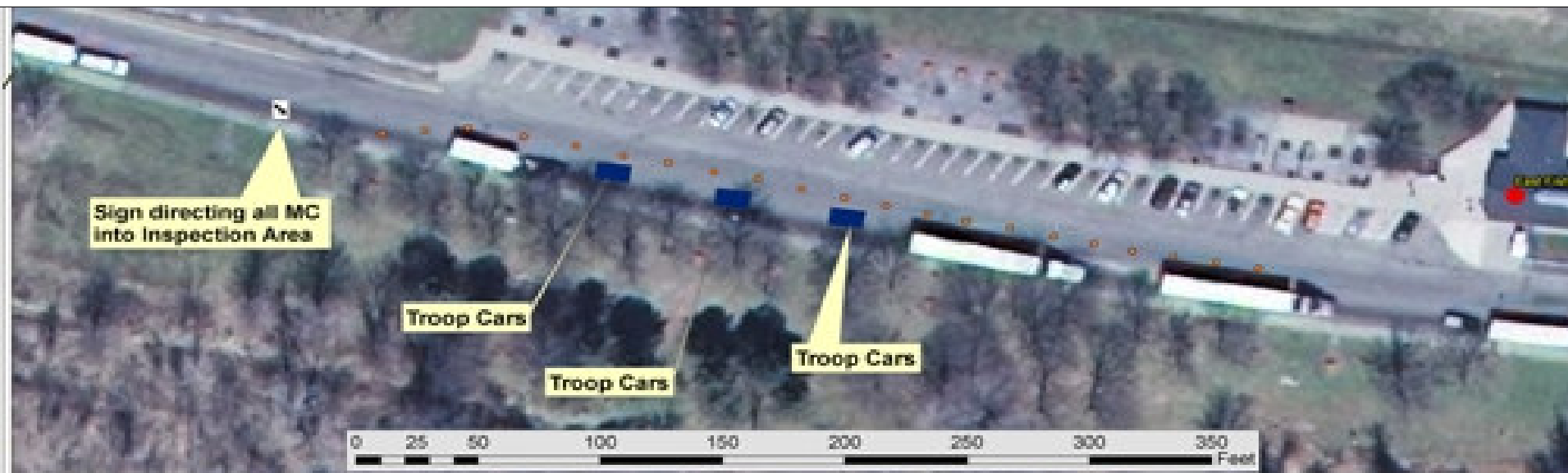


Enforcement

- **Generally – Two Phases**
 - **Checkpoint**
 - **Aerial Speed Detail**
- **Interchanges may require a supplemental detail (BUNY, Inspection Checkpoints, etc.)**







ALL
MOTOR
CYCLES





Enforcement

Overview of Checkpoint Phase

- Modeled after a DOT road check with variable message signs (VMS).
- All motorcycles are required to submit.
- Emphasis is on safety-related violations.







Enforcement

Checkpoint Phase cont'd

- Motor Officers inspect and fill out “cheat sheets.”
- The sheets are passed to the next available officer for enforcement (if necessary).
- Discretion is key – not every violation needs to be cited.



Enforcement

Checkpoint Phase cont'd

- Other police cite violators and hand out informational material.
- Delays may require waving MC's through.
- Every violation found should be documented on the "cheat-sheet".











Aerial Speed Component



- Performed several miles beyond the Checkpoint
- For all vehicles – not just motorcycles.
- Intervention used for those MC's that failed to stop at the checkpoint.

Aerial Speed

- Measured with a traceable standard
- Lines painted by DOT (MUTCD).
- Timing devices are Robic SC554 by OG Racing.com.
- Timers should be “seasoned” first.



Enforcement

Aerial Phase - cont'd

- Aerial speed detail is notified for clocking and apprehension of any fleeing vehicles.
- Should eliminate all ground pursuits.



